

# Acteon Imaging Dimension



# SOPRO, the leader in Imaging



## SOPRO, A NEW VISION

**SOPRO**, the imaging division of ACTEON Group, is based in La Ciotat in the Southwest of France and specialises in the design of imaging systems intended for medical and dental applications. **SOPRO** has a workforce of some 80 employees, including a design department with 13 engineers who work in close collaboration with dentists and surgeons.

In addition to this, **SOPRO** has a manufacturing unit, **COMEG**, recognised as an international leader in the field of endoscopy, located in Tuttlingen with a workforce of 60.

## A COMPLETE RANGE IN IMAGING AND QUALITY PRODUCTS

Specialising in image processing and electronics, **SOPRO** offers a wide range of products dedicated to dental imaging which includes, diagnostic tools to detect caries, intra-oral cameras, digital radiology systems and imaging software. The **SOPRO** product offering is designed to meet the requirements of the practitioners, no matter the configuration of the surgery. **SOPRO** develops in parallel a range of endoscopy-related medical products -cameras, light sources, insufflators and irrigators.

The acquisition of the German company **COMEG**, whose activity is complementary , has enabled **SOPRO** to extend its skill base.

## SERVICES THAT MAKE THE DIFFERENCE

The Acteon Group has an international network of subsidiaries and agencies with **SOPRO** having at its disposal commercial and technical teams that provide, reliable, fast quality of service.




# Contents

## Caries detection system:

SOPROLIFE .....p 4-5 

## Intra-oral Cameras:

SOPRO 717 .....p 6-9 

SOPRO 617 .....p 10-11 

## Digital Radiology Sensors:

SOPIX<sup>2</sup> .....p 12-13 

## Digital Radiology System by Phosphor Plate:

PSPIX .....p 14-15 

## X-ray Generator:

X-MIND .....p 16-17 

## Imaging Software:

SOPRO IMAGING.....p 18-19 

# SOPRO LIFE

Light Induced Fluorescence Evaluator

## The Blue Revolution

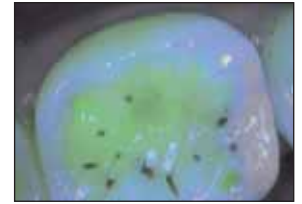


# diagnostic Aid Mode

SOPROLIFE offers greater accuracy in identifying the development of occlusal and/or proximal carious lesions. This mode potentially speeds up the decision making process in treatment planning and enables safer options for the patients by possibly reducing the number of x-rays.



Daylight Mode



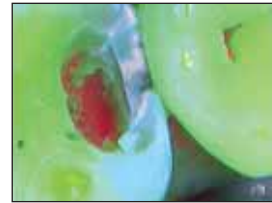
Diagnostic Mode

# treatment Aid Mode

Clinical performance is enhanced as SOPROLIFE enables you to visually differentiate between infected and affected tissue in the excavated site.



Carious Cavity in Daylight Mode



Tissue discrimination during treatment



End of treatment

# daylight Mode

In white light, from Portrait to Macro, SOPROLIFE produces unequalled quality of image. This mode not only enables you to communicate more effectively with your patients, but also gives you the ability to see details invisible to the naked eye.



Portrait



Smile



Intra-oral



Macro

- SOPROLIFE is the only concept in the world to give you two different views.
- Save time by making a faster, accurate diagnosis.
- Protect your patients by reducing the number of x-rays.
- Differentiate between healthy tissue and infected tissue.
- Enhance your clinical performance.

Infinately *accurate*,  
Infinately *valuable*

6



# Image Design allied to Image Quality



The sleek innovative design incorporates an extremely thin distal part for better access along with a highly sophisticated optical system providing exceptional image quality.

## A success from any point of view



SOPRO 717's great depth of field means you obtain a sharp image in seconds no matter what mode is chosen. Perfect illumination is achieved by eight LEDs.

## Macrovision



*Pulp chamber*



*Cracked tooth*



*Broken amalgam*



*State of surface*

Macrovision is the major advantage offered by the SOPRO 717: it goes far beyond the limits of human eye, giving you a magnified view of up to 115 times. A single gesture, and the infinitely small appears before your eyes!

- *Image magnification up to 115 times in Macro mode*
- *Exceptional quality of image*
- *A successful image captured thanks to SOPROTOUCH*
- *Perfect integration option into the dental chair*
- *Compatibility with a video screen and/or a computer*

The camera that sets  
*more* than just the tone



**SoproShade**  
*concept*



# Image and color combined



In addition to offering all the advantages of the SOPRO 717, the SOPRO 717 SOPROSHADE aids in shade selection.

## The Soproshade Concept



The separating power of the SOPRO 717 SOPROSHADE is greater than that of the eye in chromatic tone. Thus it easily reveals small color differences making it easier to select the correct shade.

## A tip for each tooth



Teeth come in all shapes, shades and sizes! For this reason, we have developed different SOPROSHADE tips, ergonomically designed to suit each case. Our color coding system makes them easily recognisable.

- *Intra-oral camera combined with a shade selection function in a single product*
- *Set of 4 tips ensuring adaptation to each tooth*
- *Factors such as poor lighting, surgery design, patients clothing are removed from the equation*
- *No more hesitation about the choice of shade*
- *An excellent aid for communication with patients and the dental laboratory*

**SOPRO** *617*

**Masterpiece**



# Optimised Ergonomics

The SOPRO 617 intra-oral camera offers a 105° view for better exploration of the distal areas. Its rounded shape and thinness of the distal part provide greater comfort in the mouth.

# Automatic Focusing and Maximum Depth of Field



Portrait



Smile



Intra-oral



Macro

Without needing to make even the smallest adjustment, the image obtained is perfectly sharp.

# Sopro Touch, the "Original"



Fix the image on the screen simply by touching the touch-sensitive SOPRO TOUCH.



- *Maximum accessibility for unequalled patient comfort*
- *105° view for better exploration of the distal areas*
- *High-quality images*
- *Great depth of field*
- *Compatibility with a video screen and/or a computer*
- *Easy to use*

# sopix<sup>2</sup>

so easy, so safe



# No more overexposed plates



The SOPIX<sup>2</sup> sensors are equipped with ACE technology. This exclusive patented process analyses in real time the amount of radiation required by the SOPIX<sup>2</sup> sensor and protects each image from overexposure. Result: the first shot is always the right one and your x-ray images are always successful.

Correctly exposed plate



Overexposed plate



# Exceptional Image Quality

The SOPIX<sup>2</sup> digital radiology sensors include the most advanced technology (CMOS fibre optics) for guaranteed high-definition images.



# Two sizes of sensor for greater comfort

sensor size 1



sensor size 2



- ACE technology controls exposure absorption
- ACE technology prevents overexposure of the image providing exceptional image quality
- Two sizes of sensor
- Rounded corners on sensors for greater comfort
- SOPIX<sup>2</sup> being fully automated is always ready to receive X-rays

pspix

ONE  
TWO

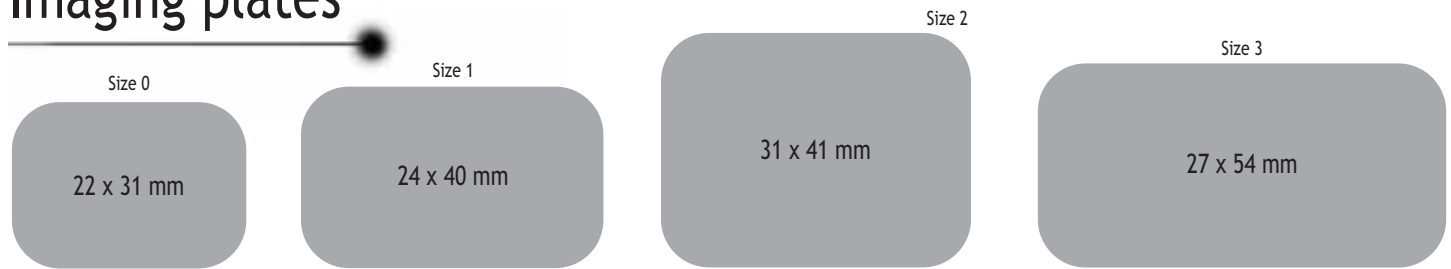
You shoot

You scan

14



# Imaging plates



The thinness and flexibility of an imaging plate provide easy positioning in the mouth. The plates are wireless, hence easy to use and their surface is 100% active. They are available in four different sizes.

## Easy and rapid

The thinness and flexibility of the plates, makes the transition to digital more smooth. In addition, the use of the plates means a substantial reduction in the dose of X-rays required. A preview screen enables you to check every step of the process. The readout time of 4.3 to 7.5 seconds makes this a fast system.



Screen wait



Screen startup



Acquisition of the plate

## Automatic developing process

The PSPIX system is fully automated as it reads and erases the imaging plates so that they are immediately reusable.



Automatic opening of the entry slot



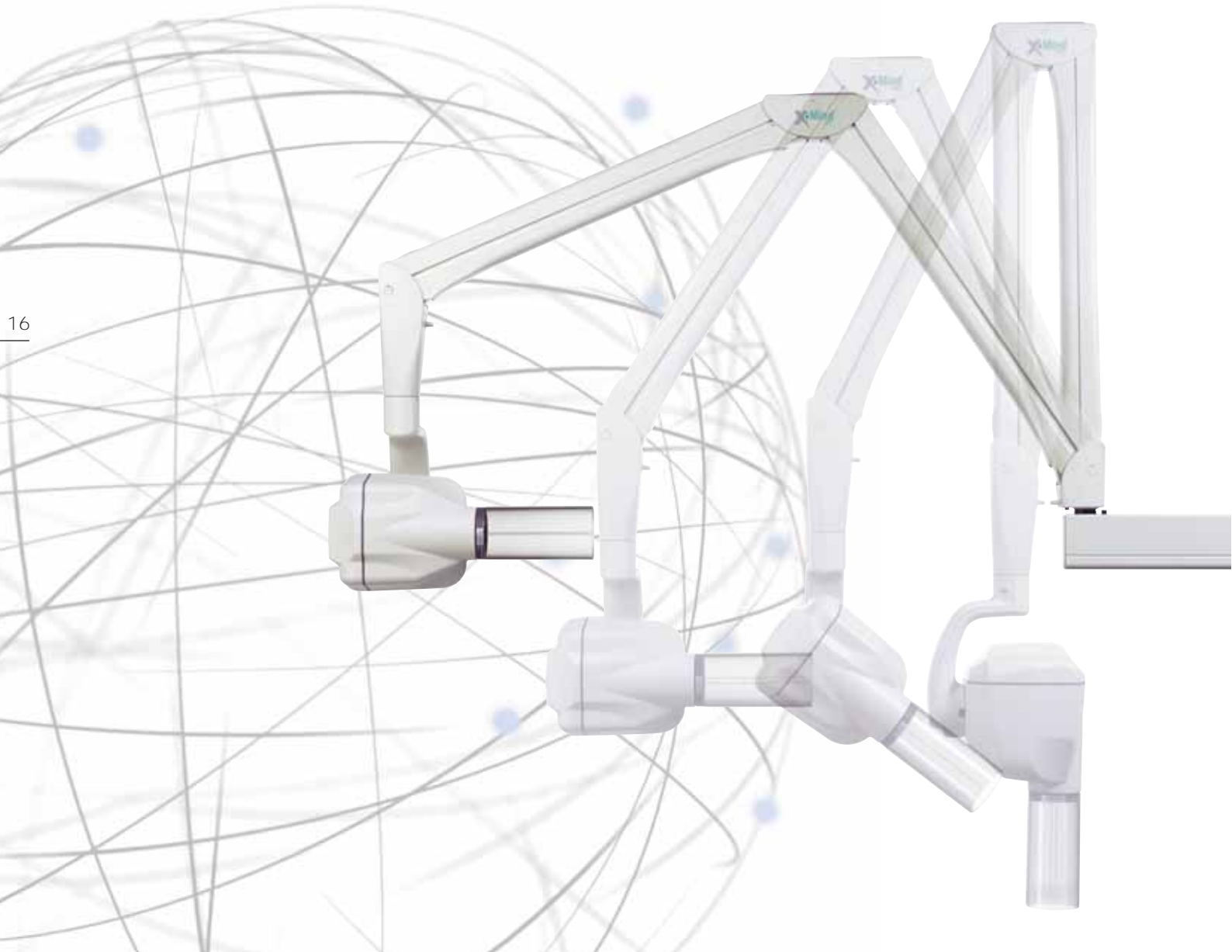
Automatic recognition of inserted plate size



The imaging plate is automatically ejected.

- *Unvarying image quality*
- *PSPIX is 100% automated*
- *PSPIX adapts to your environment, mono- or multi-users*
- *Compatible with all types of intra-oral generators, AC or DC*
- *Smart design and compact*
- *The advantages of going digital without losing the flexibility of film*

# The Instinct for Perfection



# Reliability of the X-MIND AC and DC generators



The X-MIND AC and DC generators are renowned for their reliability and their unvarying performance. Two beam limitation systems together with the expansion chamber enable the operator and his/her assistant to work in complete safety.

# Shorter exposure time with X-MIND DC generator



Exposure times with the X-MIND DC generator are optimised for use with digital sensors.

# Programmable user-defined timer



With the X-MIND timer, the micro-processor controlled exposure times are user-defined and programmable. The timer is compatible with digital imaging systems and can control two AC and/or DC generators alternatively.

- *Very high quality plates*
- *Two X-Mind AC and/or DC generators can be controlled by a single timer*
- *Rotation at 395° around the vertical axis*
- *Better protection thanks to a high focus-to-skin distance*
- *Programmable timer*

# sopro Imaging

Digital imaging at your *Service*

18



# Intuitive, Multi-Purpose, Multilingual Software



Sopro Imaging software is the central node of the user interface for the Sopix<sup>2</sup>, PSPIX, SOPROLIFE systems and the SOPRO cameras. Sopro Imaging's multilingual software has multi-purposes, as it can be used to enter, process and archive x-ray images, colour images and video sequences. Intuitive software, with the accent on ease of use.

## Networking



The installation and use of Sopro Imaging software is simplified when configured into a computer network.

## Links



Sopro Imaging has numerous links to the dental surgery's main applications.

- *Intuitive, multilingual software*
- *Simplified network integration*
- *Compatible with management software packages*
- *Offers a wide range of image processing tools*
- *Includes modules dedicated to SOPROLIFE, SOPROSHADE, SOPIX<sup>2</sup>, etc.*

